

Groups

Written by Gabriella Gombar
Tuesday, 01 December 2009 12:51

HLMDI's organizational structure follows responsive, integrating and inclusive knowledge processes redesigned within the framework of the Breakthrough Systems of Innovation OrgDNA

The Nominating Committee has recognized "Knowledge Assessment" activities as an integral part of Knowledge Management processes

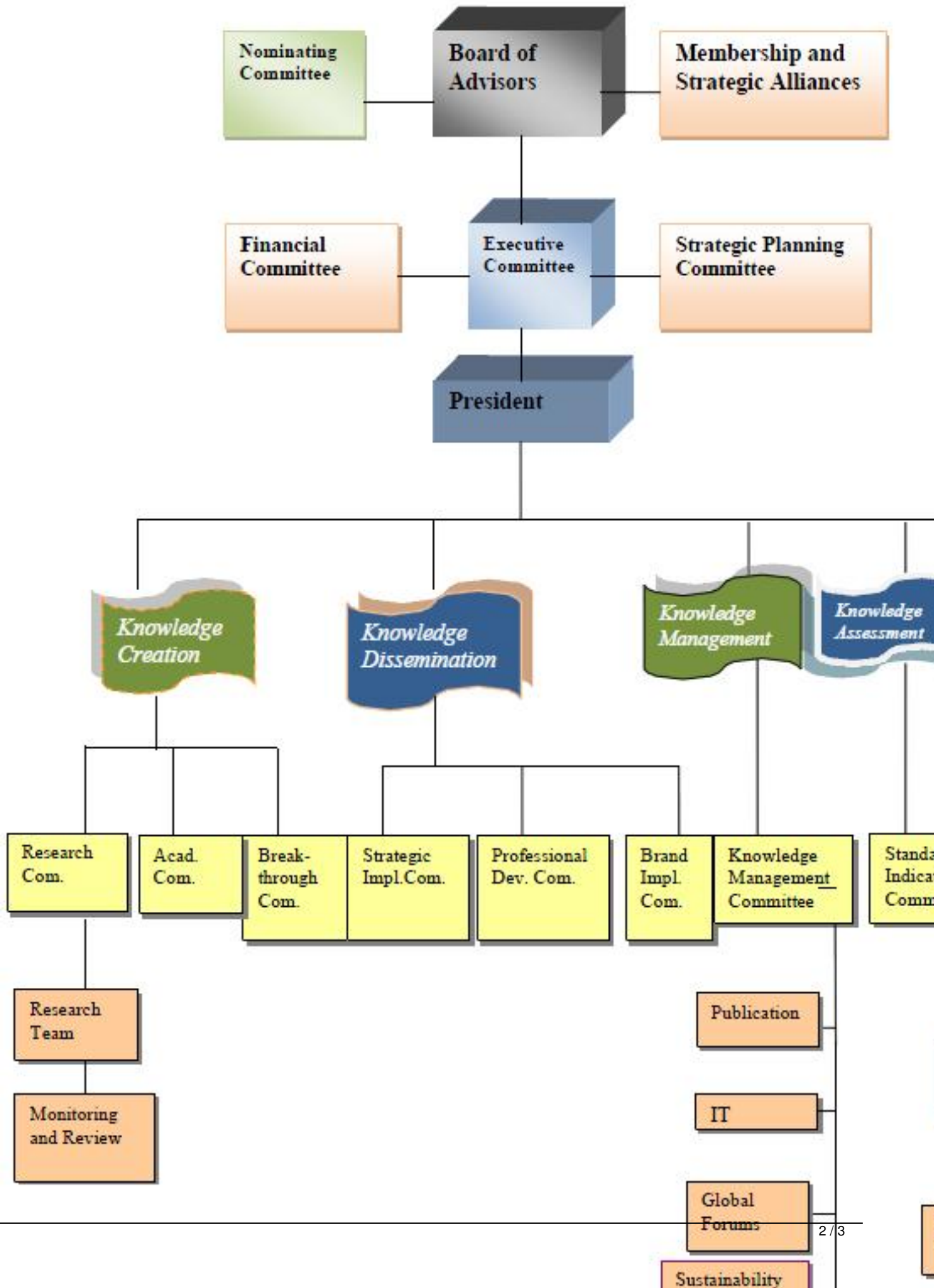
Special Focus Committees for promoting "*Migrant Sensitive Healthcare*" as well as "*Public Health Education and Research*

" have already received endorsement by the Nominating Committee

Structure

Groups

Written by Gabriella Gombar
Tuesday, 01 December 2009 12:51



Groups

Written by Gabriella Gombar
Tuesday, 01 December 2009 12:51
